

The slow interchange

The quality of sharing in mobile and public space

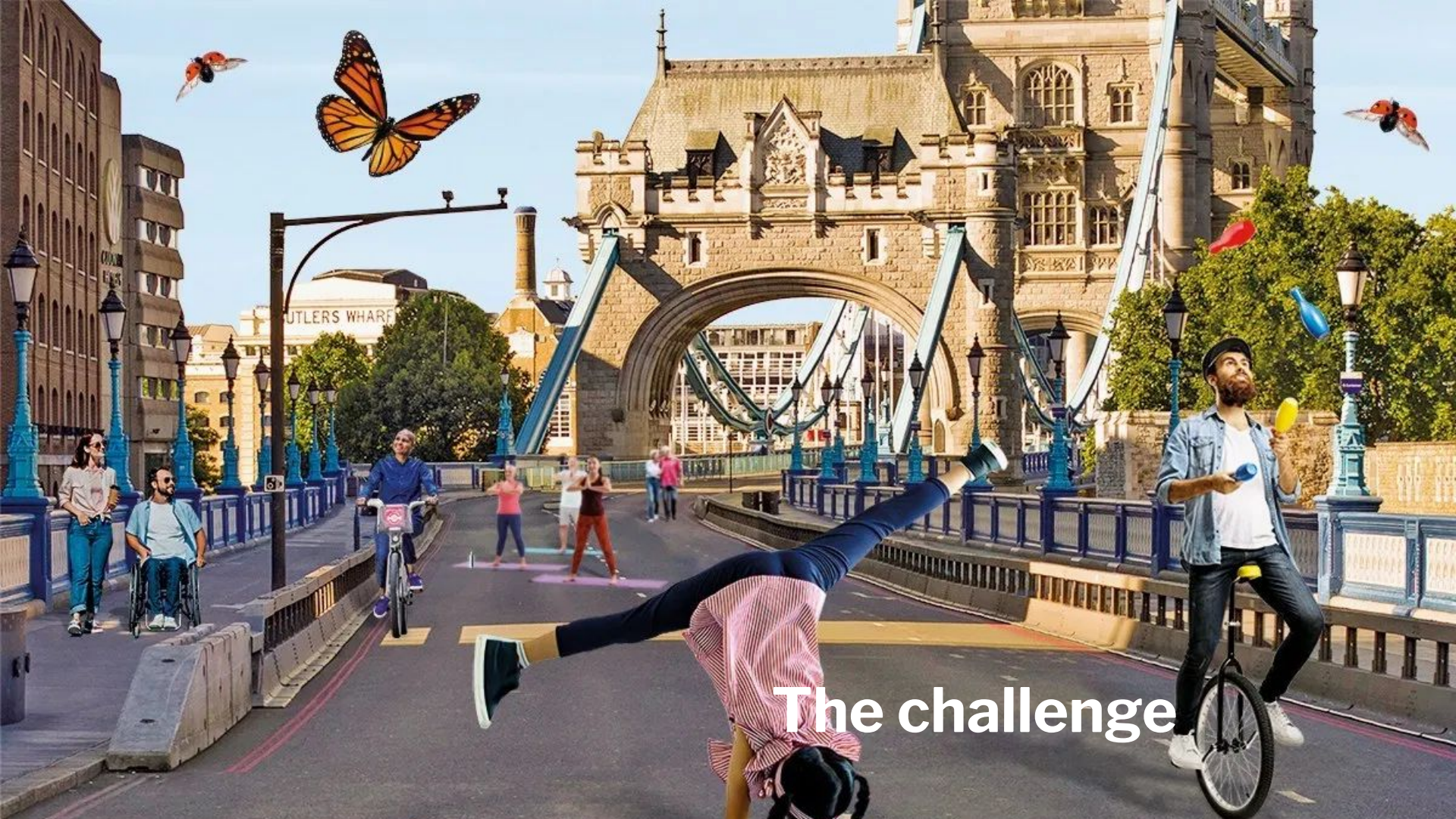


Royal College of Art



Welcome to
Euston Station

The challenge



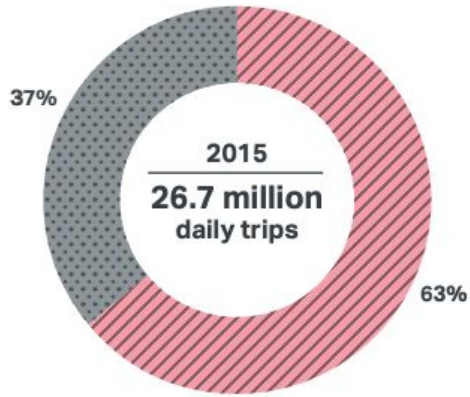
The challenge



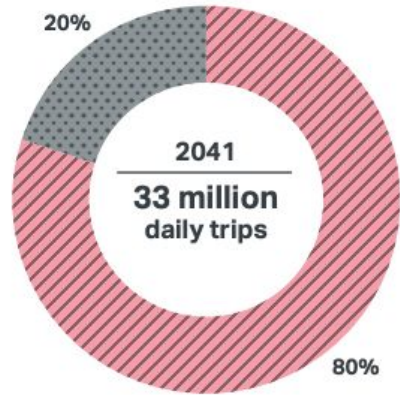
The challenge



The challenge



- 17 million 'sustainable' trips in 2015
- 26.5 million 'sustainable' trips in 2041



Walking, cycling & public transport Car, taxi and private hire vehicle

The challenge



The challenge



The challenge



The challenge



Research

Moving people and goods



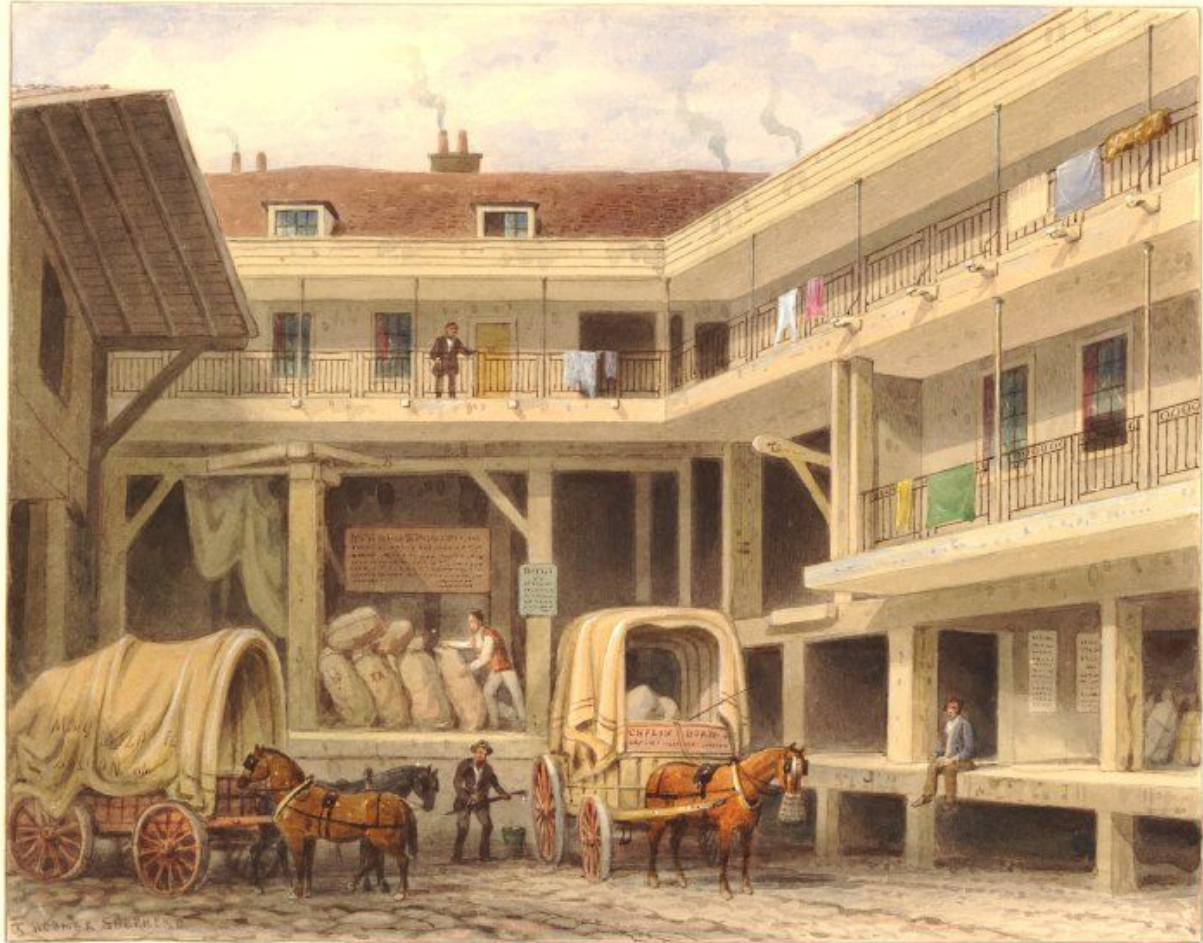


**Hospitality,
accommodation,
food, drink**

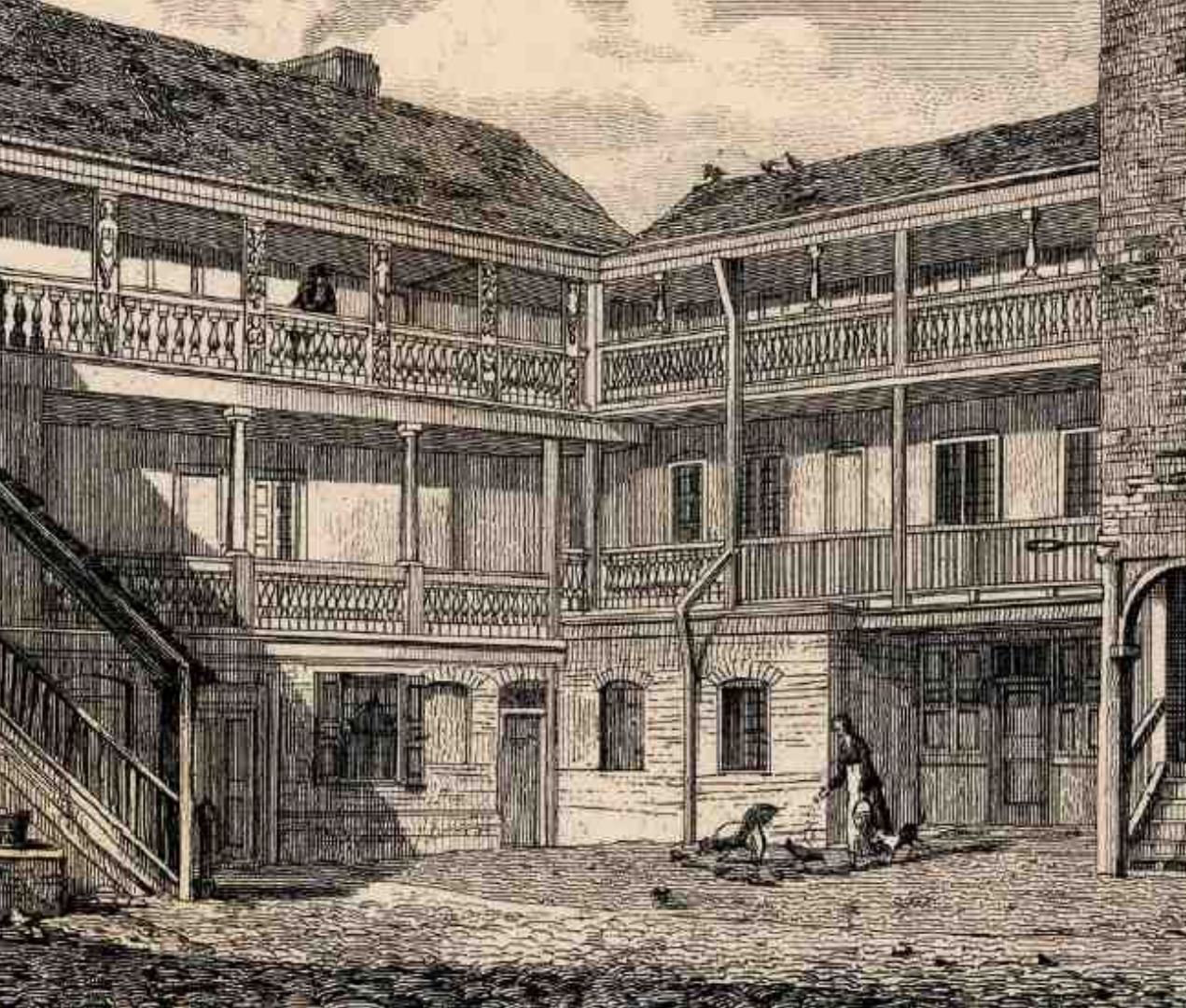
By Tho^s J. W. M. Clarke R.S. & Co. London. 1792.
TAX. in the middle of a smothering hot Political squabble, comes to visit his W

INN KITCHEN, LATE XVIIITH CENTURY. (T.

Stabling and grazing plus sheds for livestock



The Blossoms Inn, Lawrence Lane J. H. Shepherd



**Encouraged
the growth of
small
businesses and
craft
workshops by
renting out
properties in
their yards**

Research

- Developing credit and trade networks
- A meeting place for merchants and manufacturers
- hosting a variety of meetings, auctions and sales





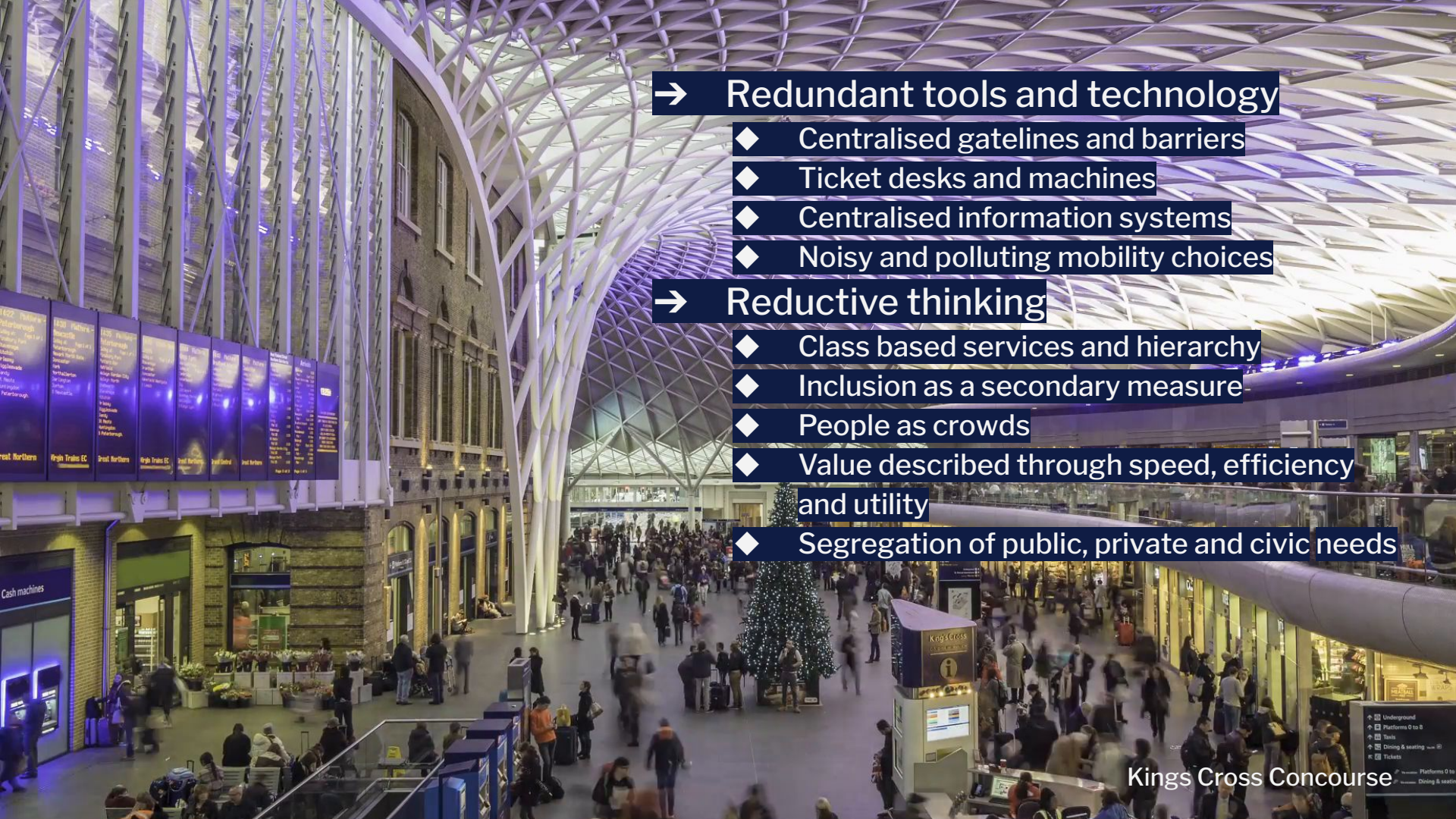


Mansfield
Bus Station

Mansfield Bus Station



- Public but not civic space
- Efficient movement of people and transit
- Fast food, fast turnover, fast throughput



→ Redundant tools and technology

- ◆ Centralised gatelines and barriers
- ◆ Ticket desks and machines
- ◆ Centralised information systems
- ◆ Noisy and polluting mobility choices

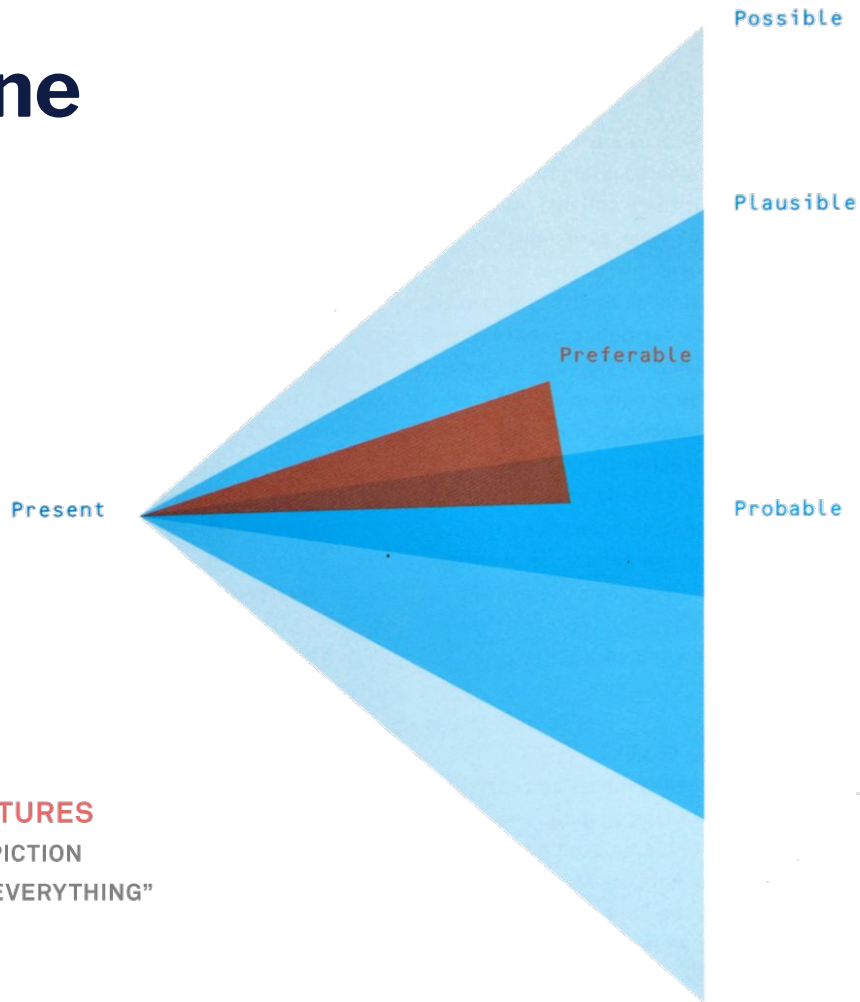
→ Reductive thinking

- ◆ Class based services and hierarchy
- ◆ Inclusion as a secondary measure
- ◆ People as crowds
- ◆ Value described through speed, efficiency and utility
- ◆ Segregation of public, private and civic needs

Collaboration



Future Cone



Utopias

- ◆ Hopes and Dreams
- ◆ Assets
- ◆ Opportunities



Dystopias

- ◆ Challenges
- ◆ Risks
- ◆ Fears

CONE OF PREFERABLE FUTURES

BASED ON STUART CANDY'S DEPICTION
DUNNE & RABY, "SPECULATIVE EVERYTHING"
MIT PRESS 2014



Equality &
Economy

Flexibility &
Technology

Diversity &
Culture

Wellbeing &
Leisure

Sustainability
& Environment

Themes

HOPES

GOOD SPRINT PLANNING

WE'LL BUILD MACHINES

WE'LL BUILD MACHINES

WE'LL BUILD MACHINES

SPARKER WOULD AGREE TO AN OFFER TESTING FEASIBILITY

WE GET OUR OWN SELF BELIEF INSTEAD OF SILENCE

SCOPE CREEP

WE'LL BUILD MACHINES

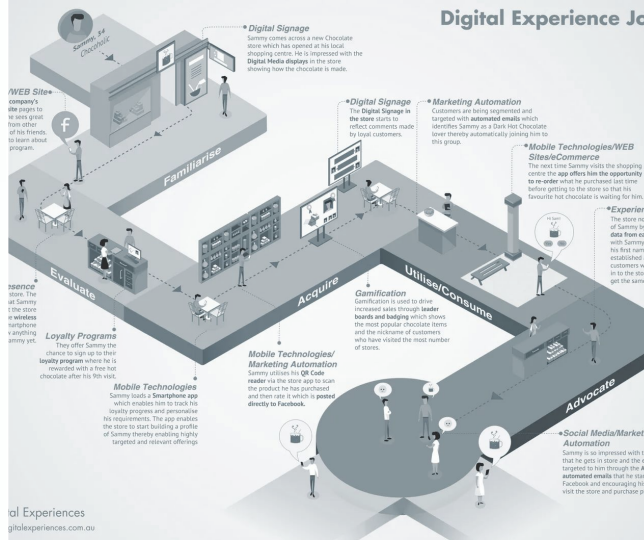
WE'LL BUILD MACHINES

WE DELIVER 100% OF THE PROMISE BY FIRST DEMONSTRATION

TODD SPOKE TIME IN MEETINGS

WE'LL BUILD MACHINES

FEARS



al Experiences
globoexperiences.com.au



WestonWilliamson+

Methodology

Hopes /
Fears

People

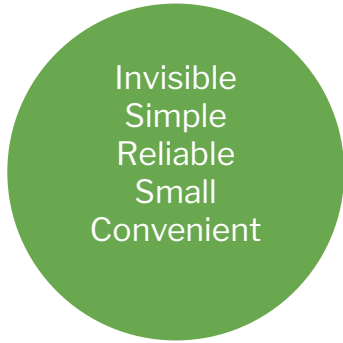
Activities

Purpose

Insights



Equality & Economy



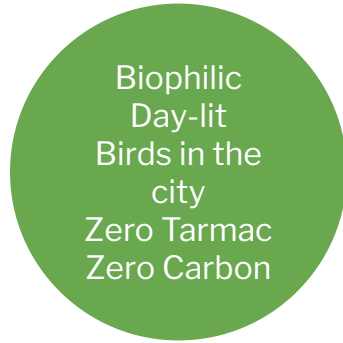
Flexibility & Technology



Diversity & Culture



Wellbeing & Leisure



Sustainability & Environment

Hopes / Fears



People



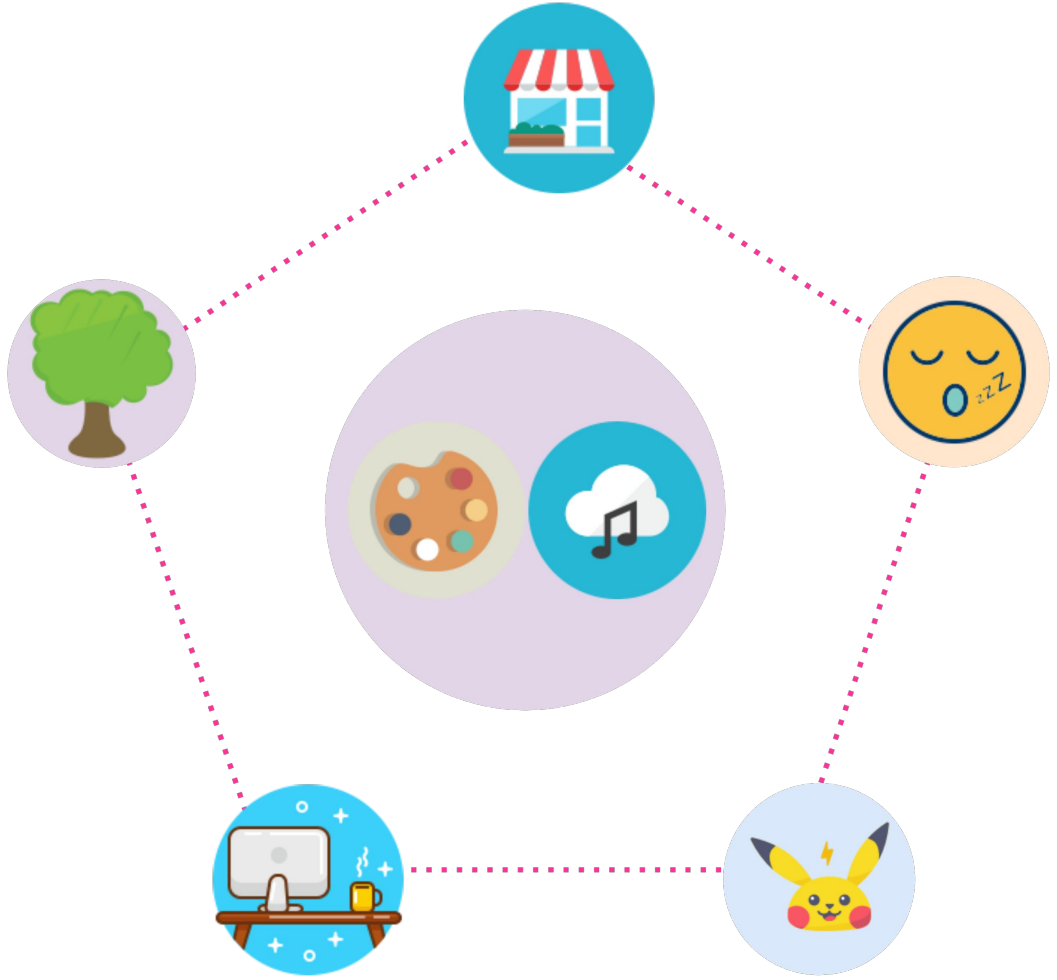
Activities

**“a hub where
various modes of
transport meet
and combine to
get a user door to
door as
seamlessly as
possible”**



**“To become once
again the civic and
much loved place,
and a place that
never sleeps.”**

Purpose





Ticketless, barrier-free and information rich mobility





Consolidation centres and smart logistics within the interchange





**Smarter, smaller
and more flexible
e-bus and tram
services that
connect through
and around the
interchange**





**Integrating
nature and
ecosystem
services into
networks &
interchanges**





**Green parks and
daylit spaces
rather than
'iconic' roofs**





**Walkable and
cycle friendly
neighbourhoods
surrounding every
interchange**





**Dispersing
entrances into
and through the
interchange - part
of the community,
not separate**

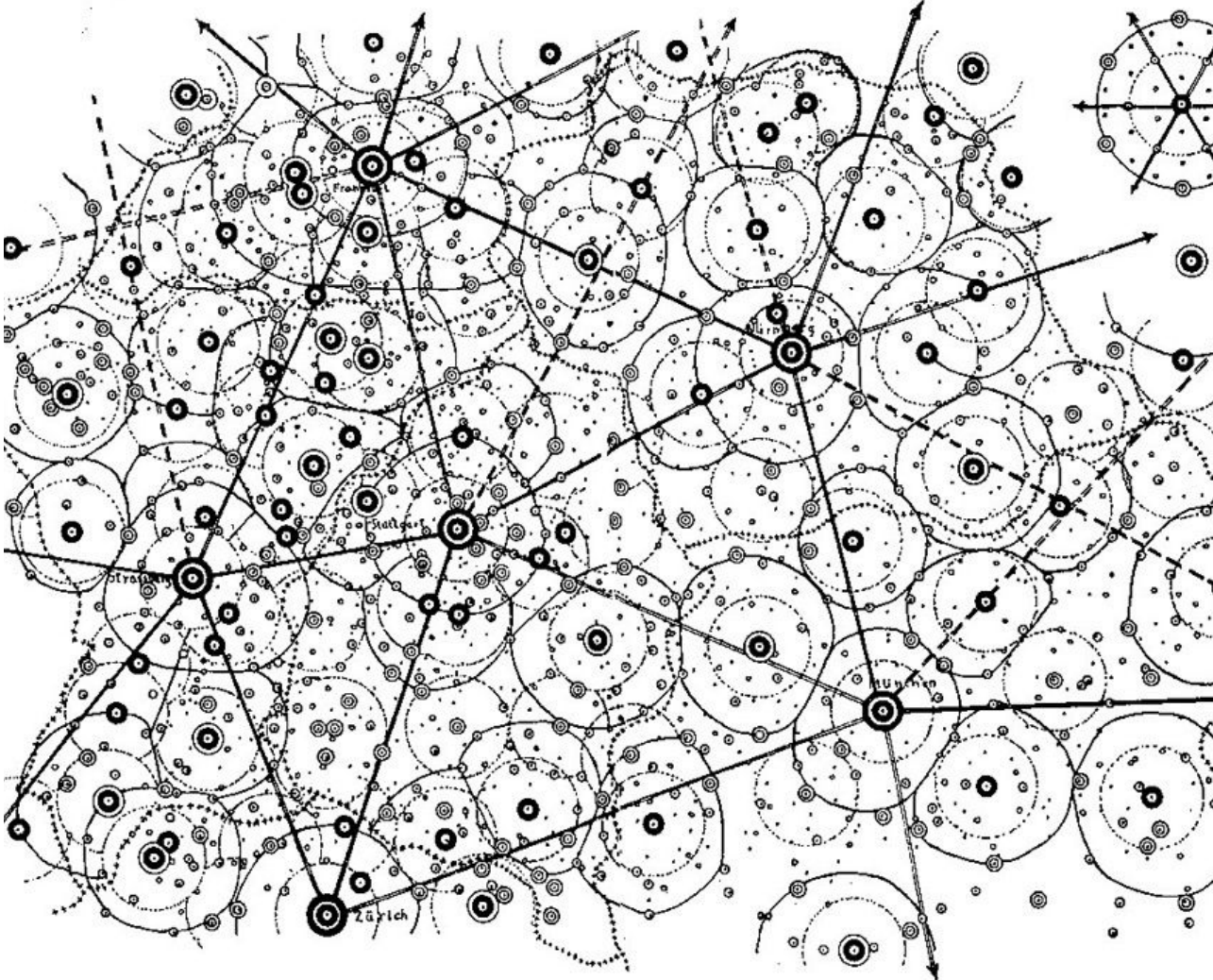




**Integrating
destinations and
services within
the interchange -
absorbing
mobility into the
community and
visa versa**



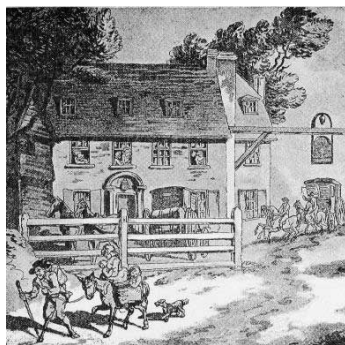
**Polymorphic
cities with
the
interchange
at the heart
of each
community**



Summary



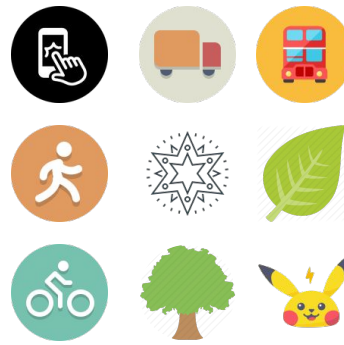
Challenge



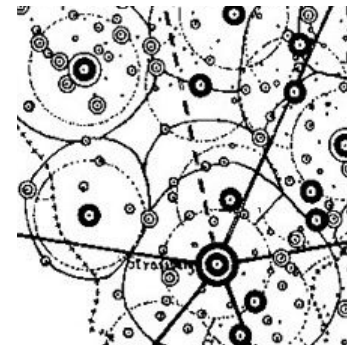
Research



Collaboration



Insights



Model

Thanks



Royal College of Art